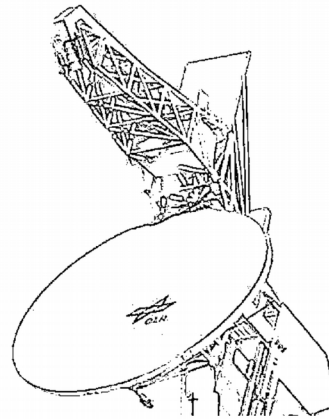
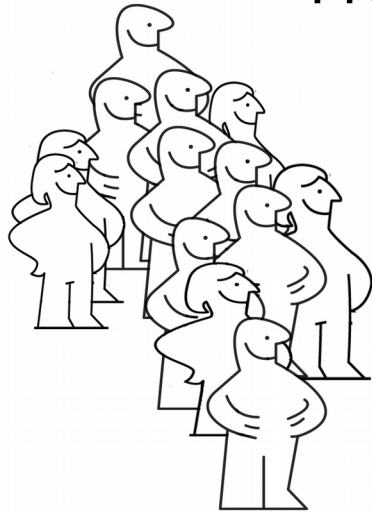


EUREC⁴A Briefing 26

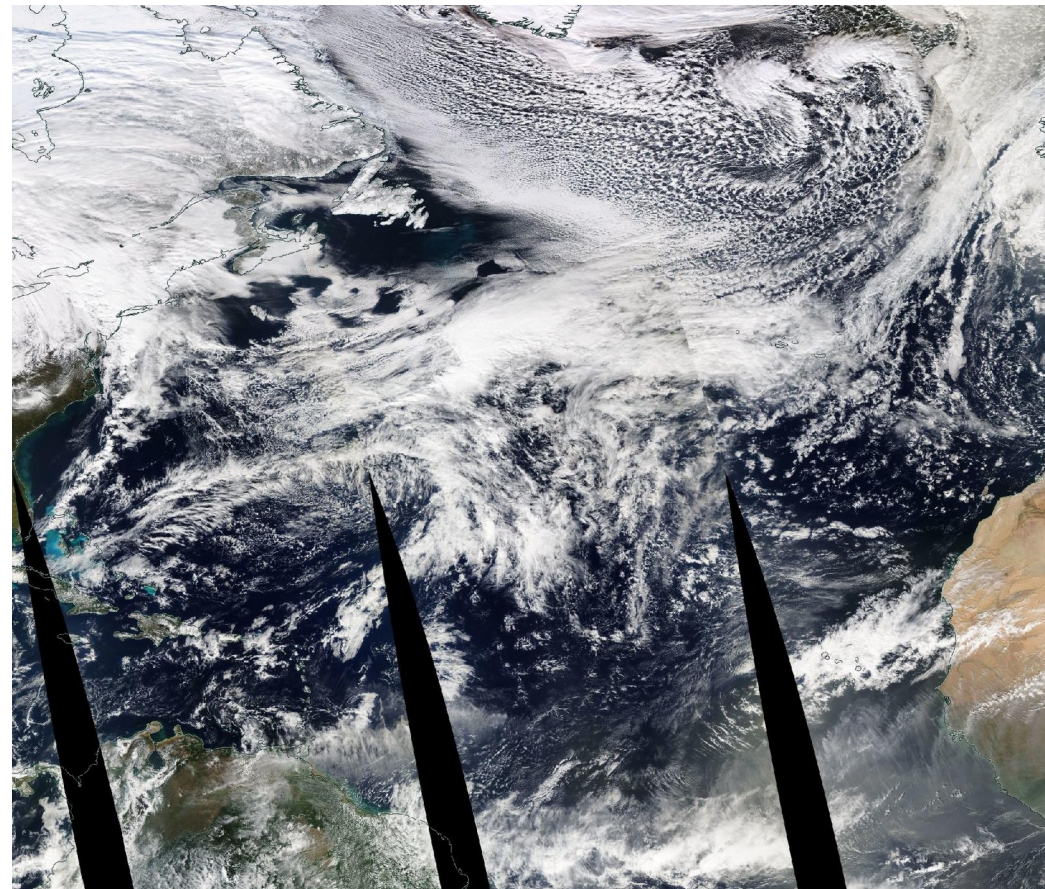
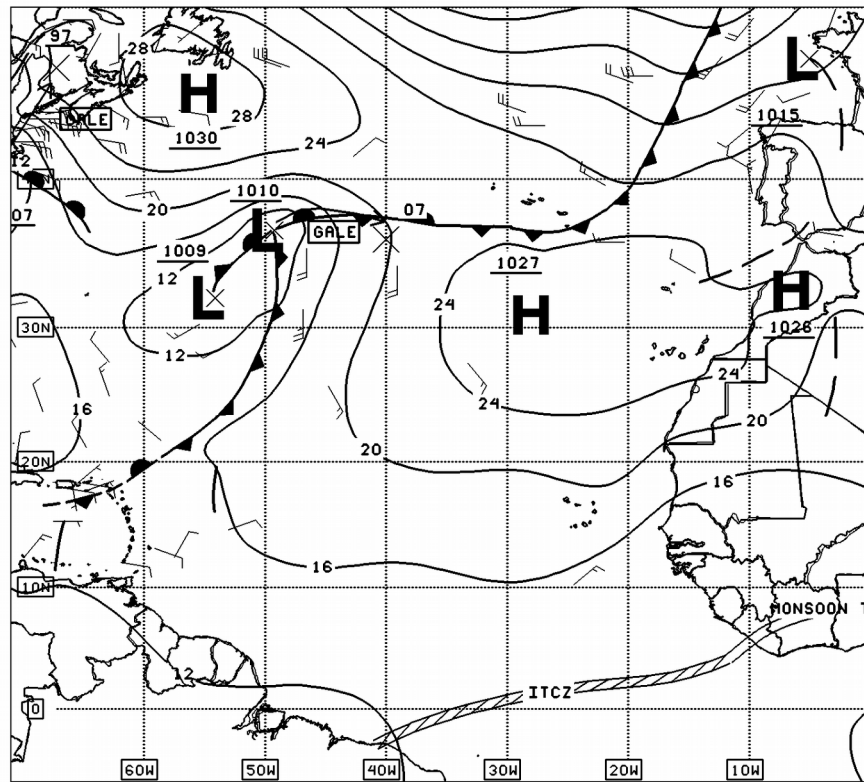
Jan 2020

Presentation by die zwei Otter(n)



NOAA Synoptic analysis, 0 Z Day D+ Aqua 25/01

Synoptic features: Low and High west of Cape Verde have moved further westward, broad warm sector. Small scale local ridge/trough systems



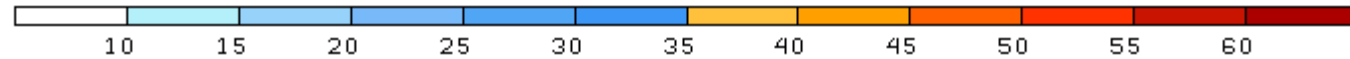
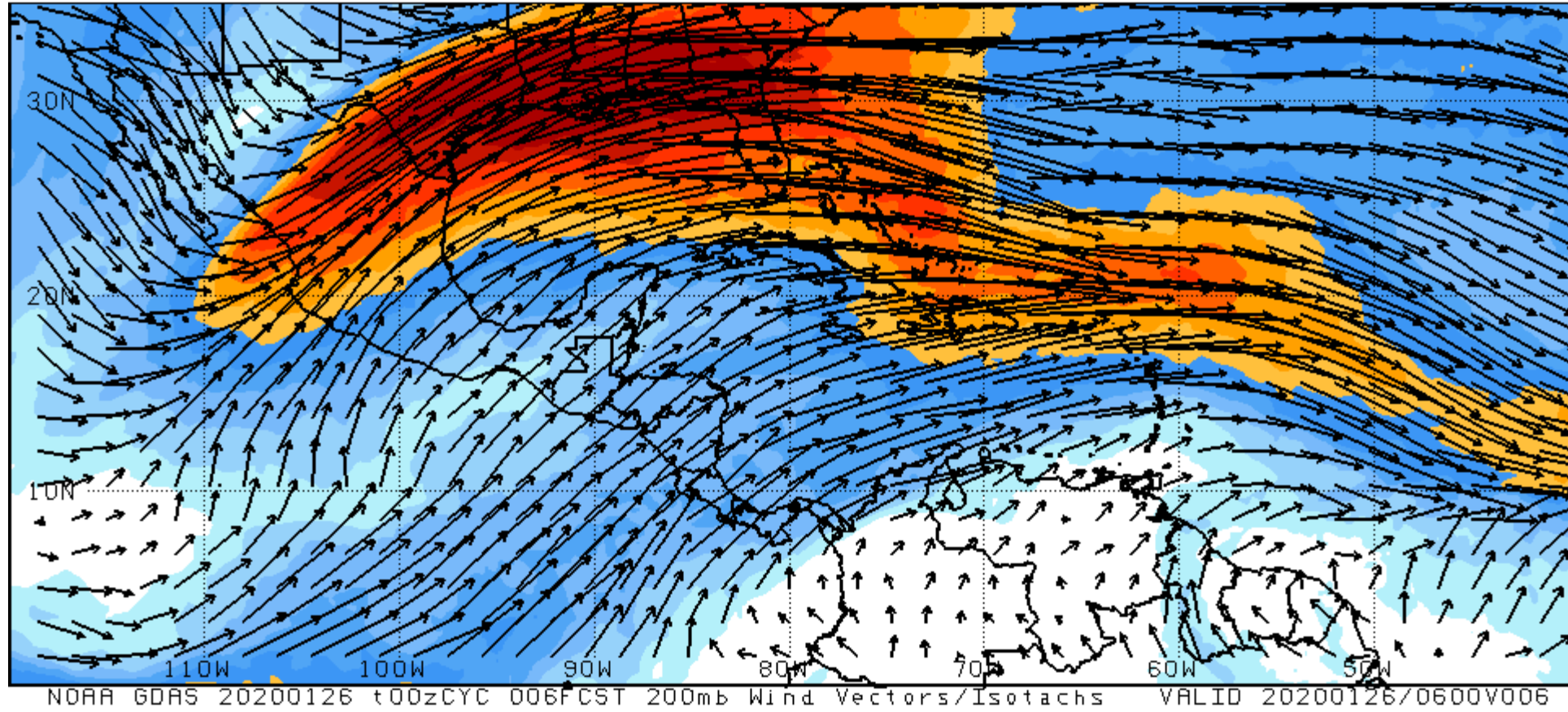
00Z EASTERN TRPCL SFC ANALYSIS
ISSUED: Sun Jan 26 02:33:08 UTC 2020



NHC/TROPICAL ANALYSIS AND FORECAST BRANCH
MIAMI, FLORIDA

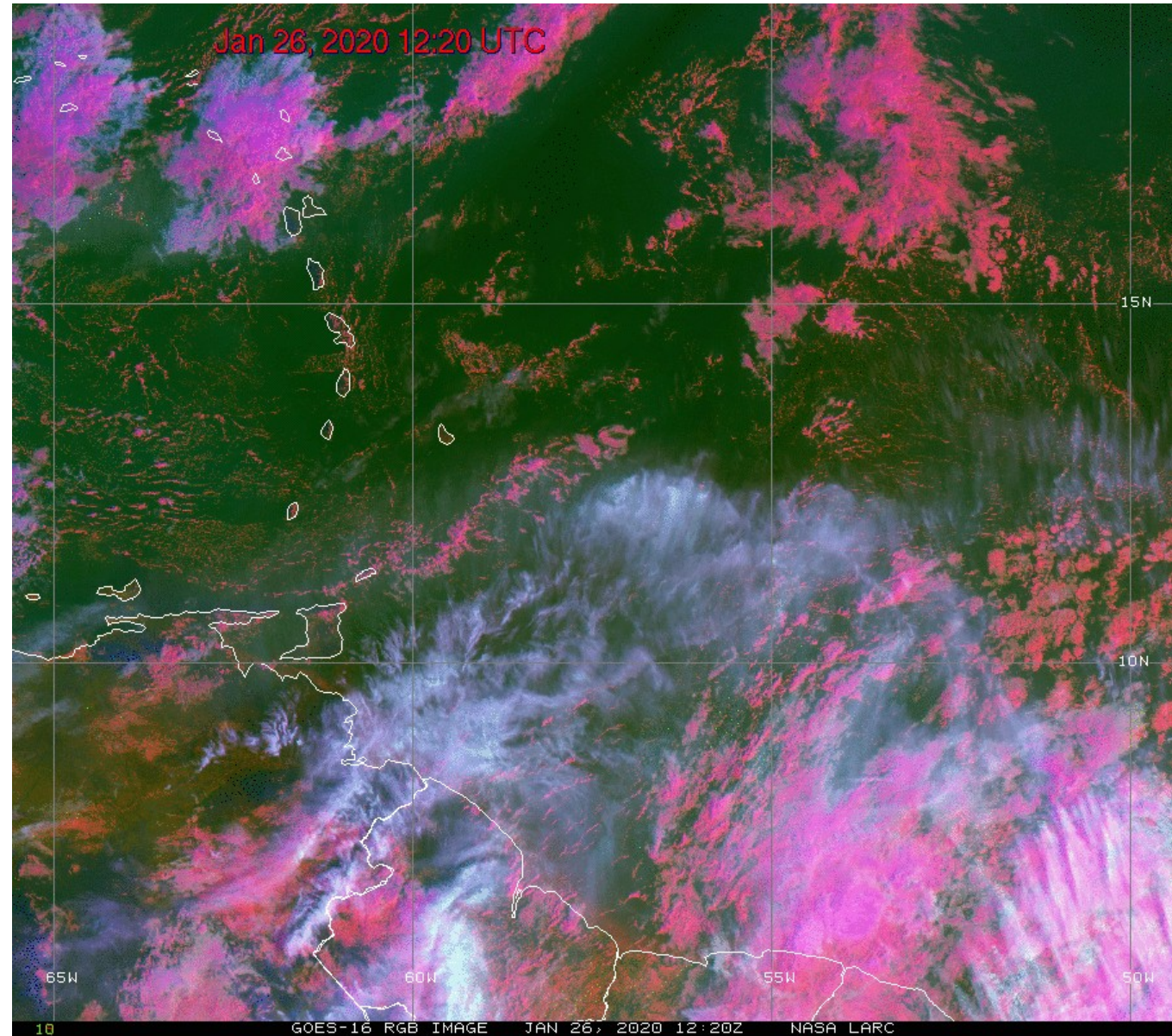
BY TAFB ANALYST ERA
COLLABORATING CENTERS: NHC OPC WPC

NCEP 200 hPa winds (6Z)

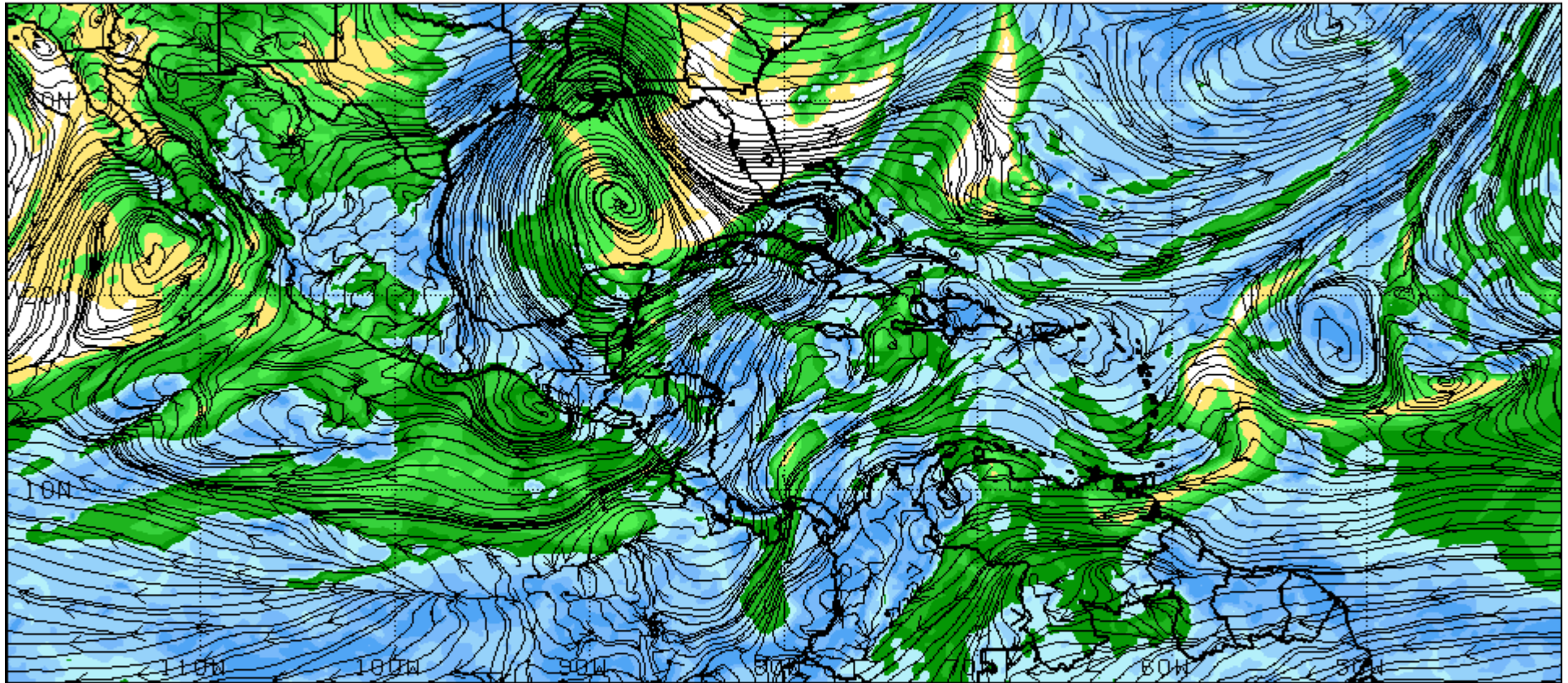


10 m/s →

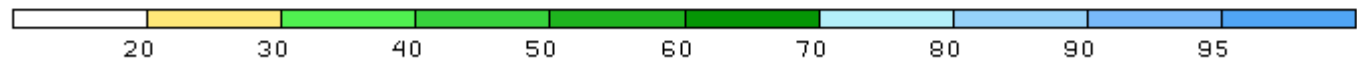
Satellite picture
(NASA/GOES 16)



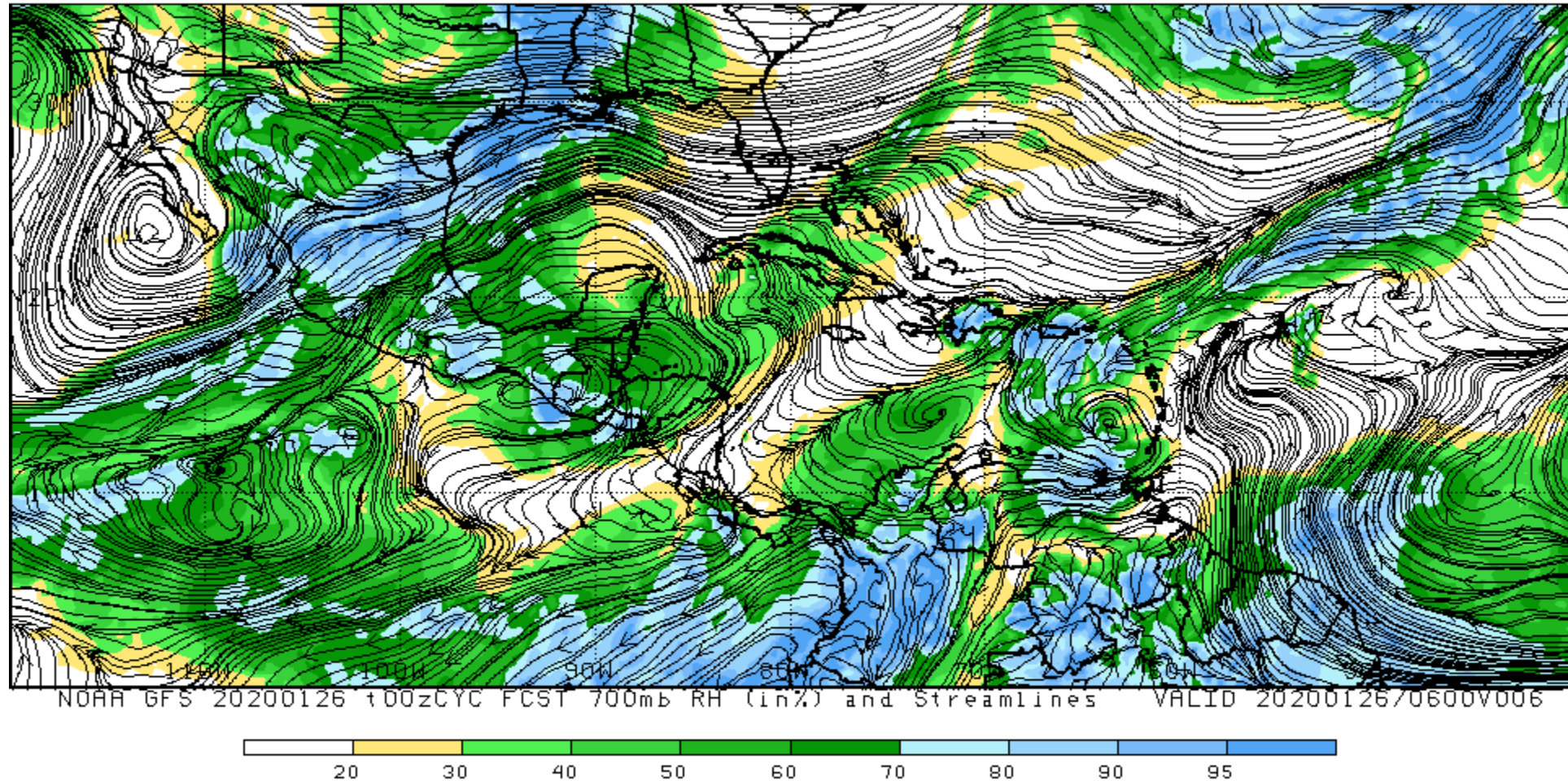
850 hPa winds and moisture (6Z)



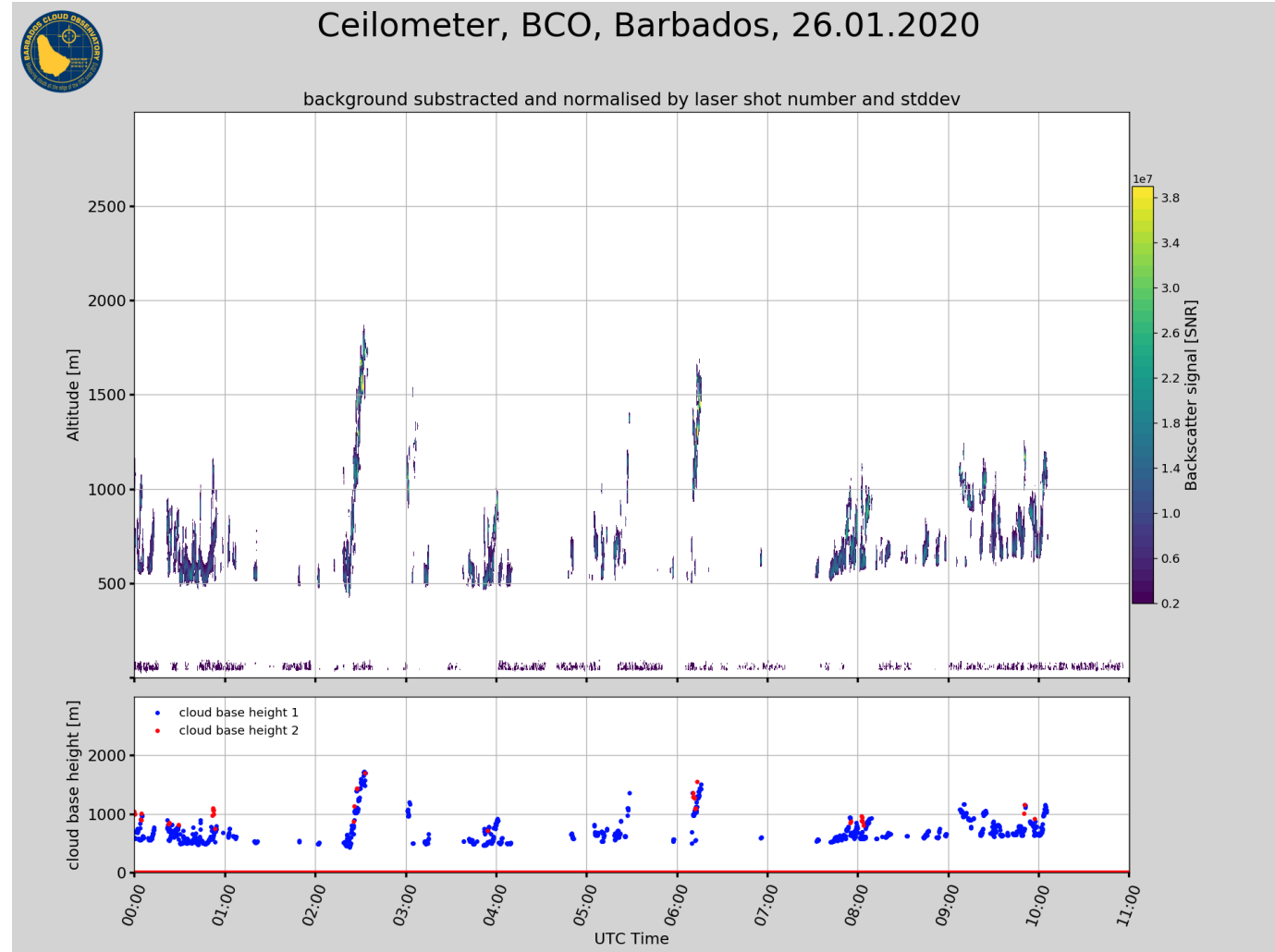
NOAA GFS 20200126 100zCYC FCS1 850mb RH (in%) and Streamlines VALID 20200126/0600V006



700 hPa winds and moisture (6Z)

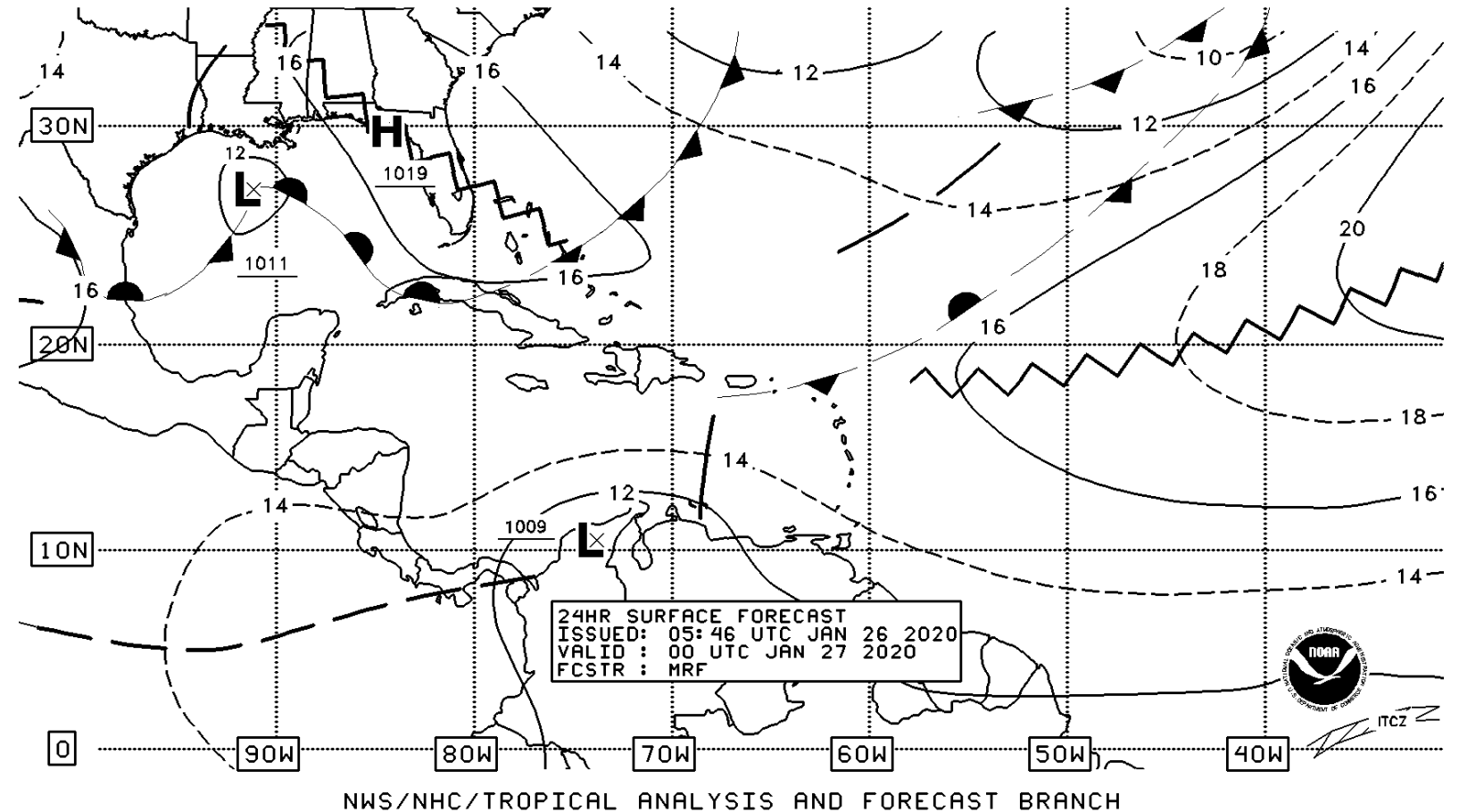


BCO ceilometer today



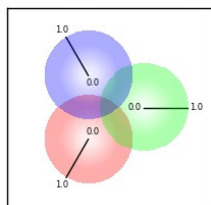
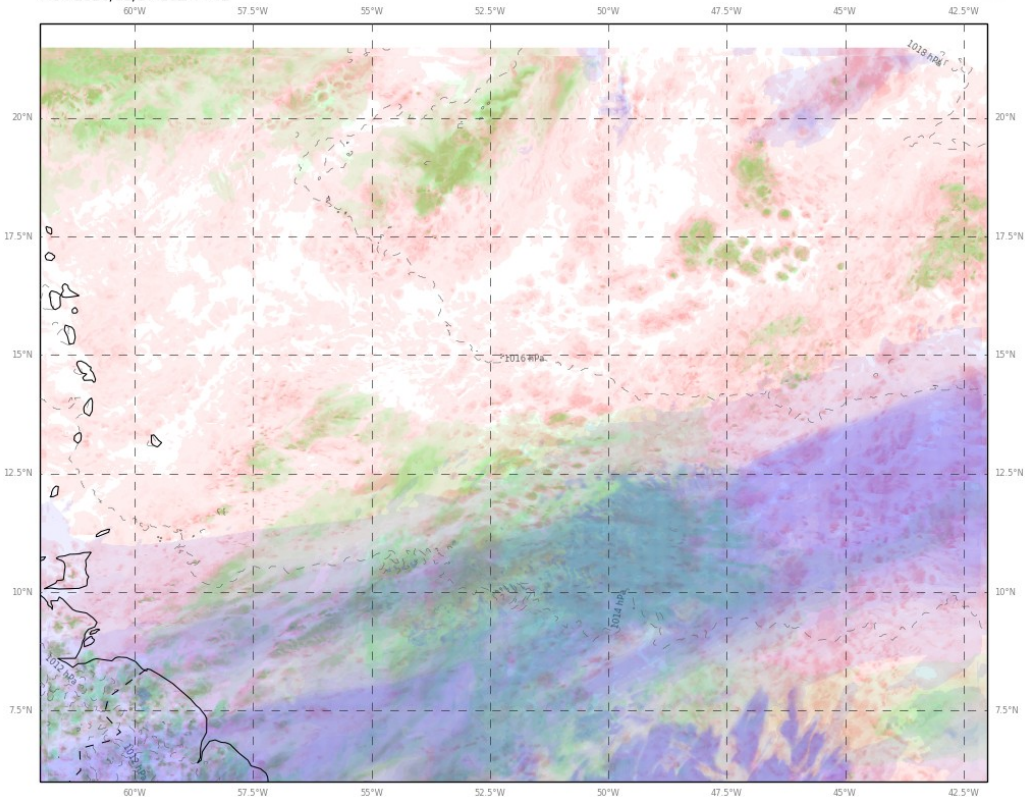
Synoptic forecast chart 0000 UTC, D+1

- Sfc. ridge



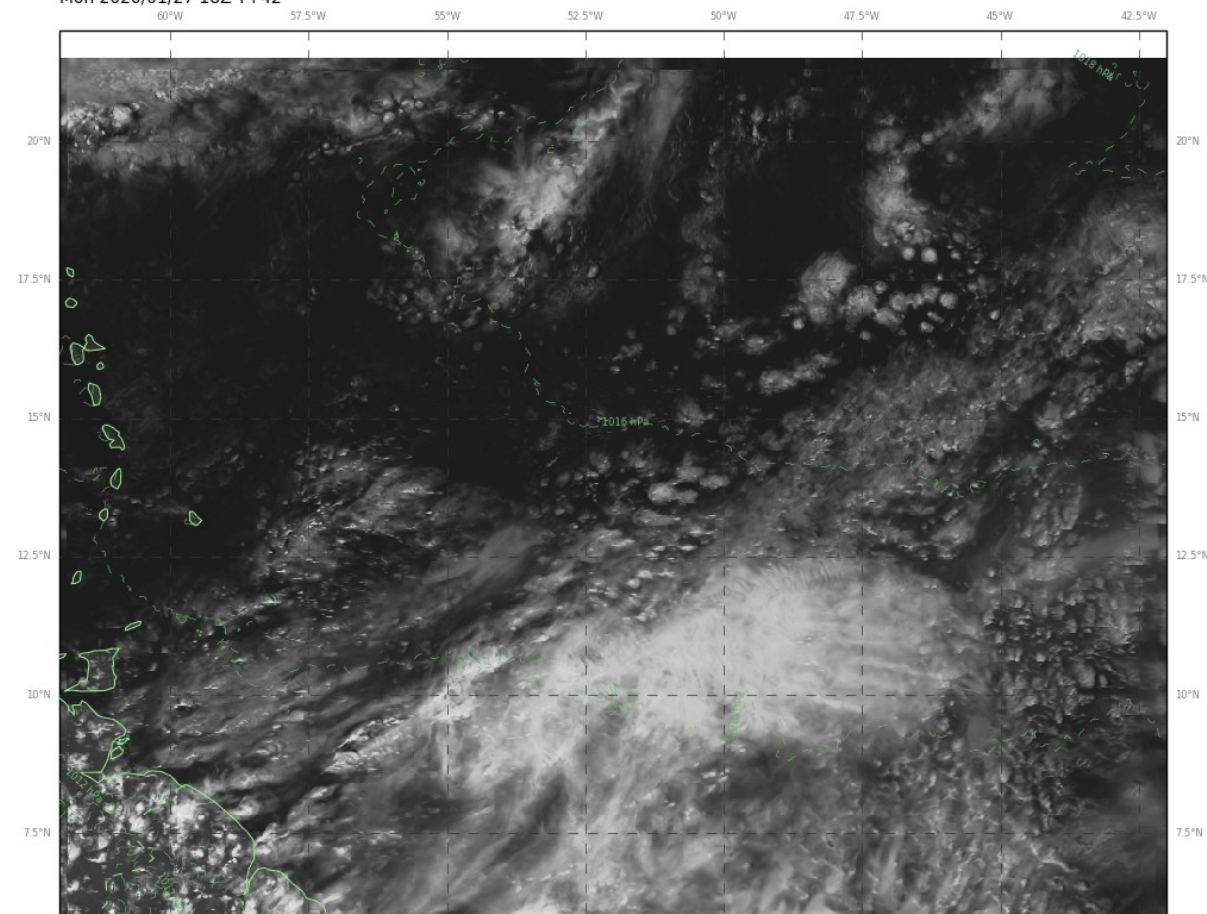
Clouds D+1 (18Z)

Cloud: Low, Medium, High
 Met Office EUREC4A 2km from 2020/01/26 00Z
 Mon 2020/01/27 18Z T+42

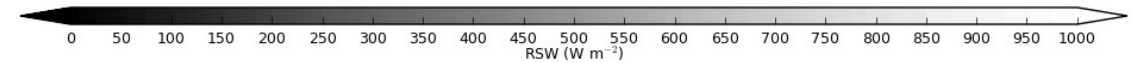


High cloud (~18000ft to ~45000ft) is blue,
 mid-level cloud (~6000ft to ~18000ft) is green,
 low cloud (surface to ~6000ft) is red
 and the cloud types are combined as shown.

Reflected Shortwave Radiation at TOA
 Met Office EUREC4A 2km from 2020/01/26 00Z
 Mon 2020/01/27 18Z T+42



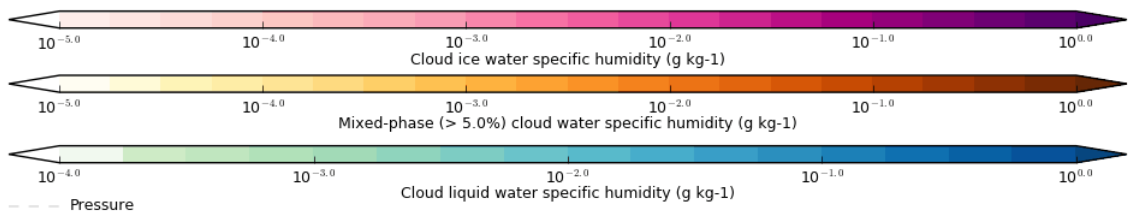
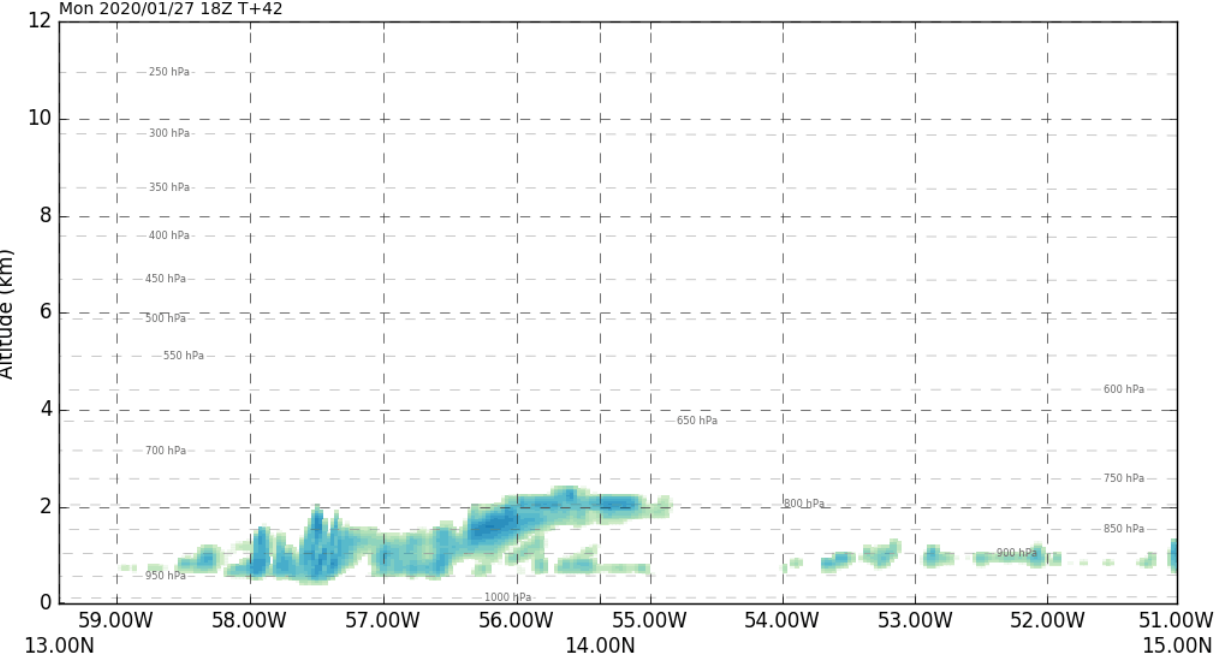
MIN=75.875, MAX=859.547, MEAN=231.285, SD=150.596, RMS=275.993



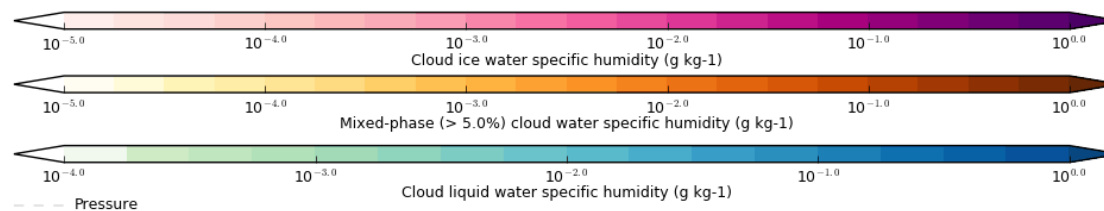
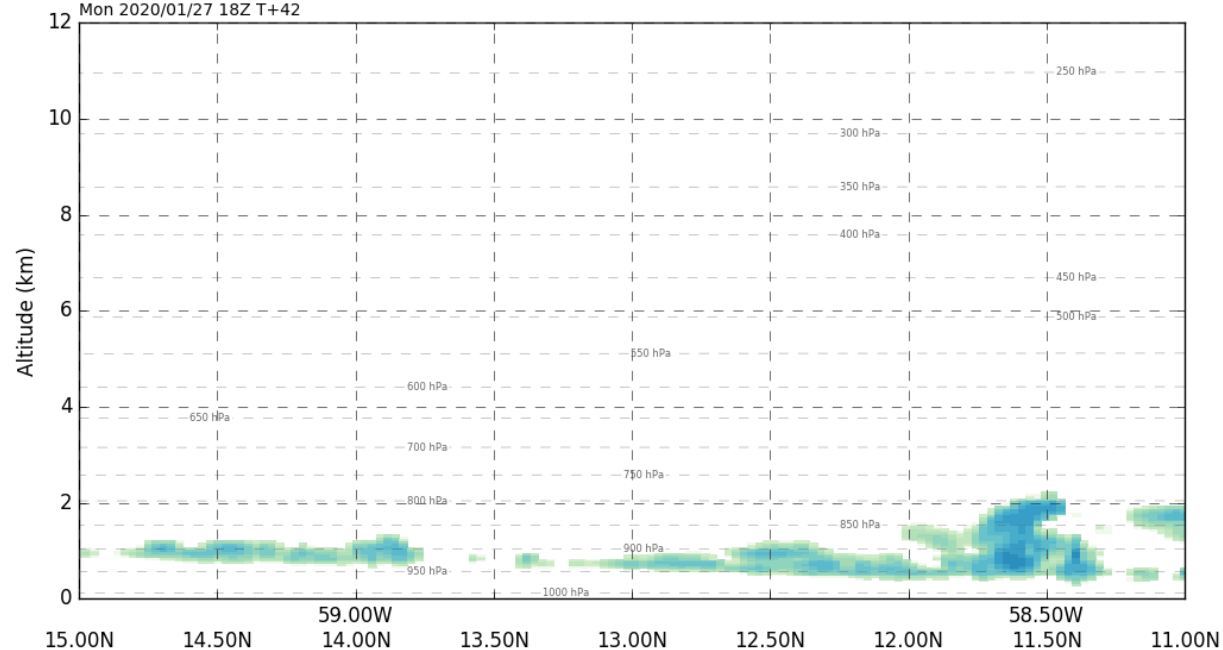
--- Pressure (mean sea level)

Clouds D+1 (18Z)

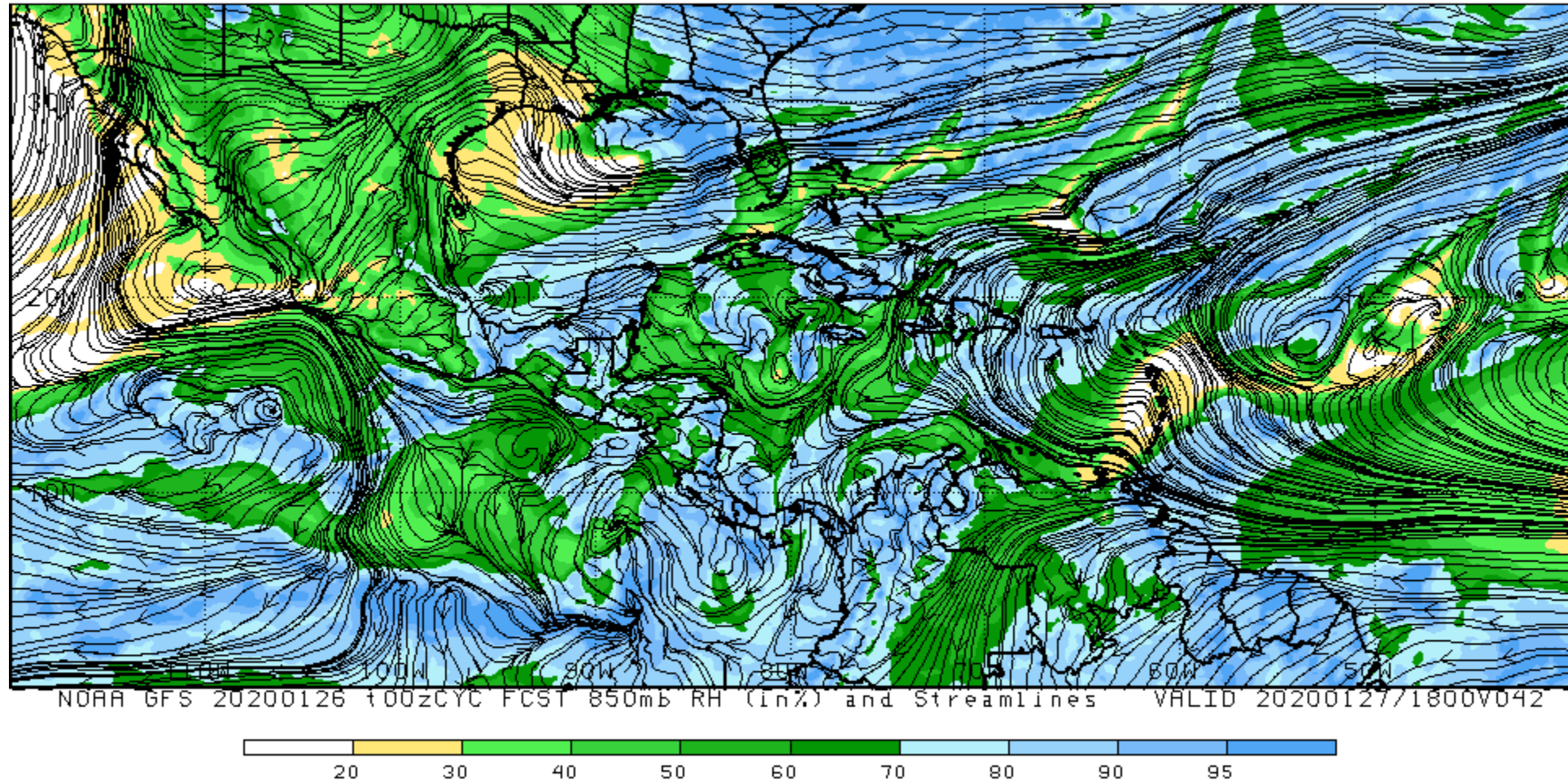
Cloud liquid and ice water specific humidity
 Met Office EUREC4A 2km from 2020/01/26 00Z
 EUREC1 (59.43W,13.16N to 51.02W,14.82N, 0 to 12km)
 Mon 2020/01/27 18Z T+42



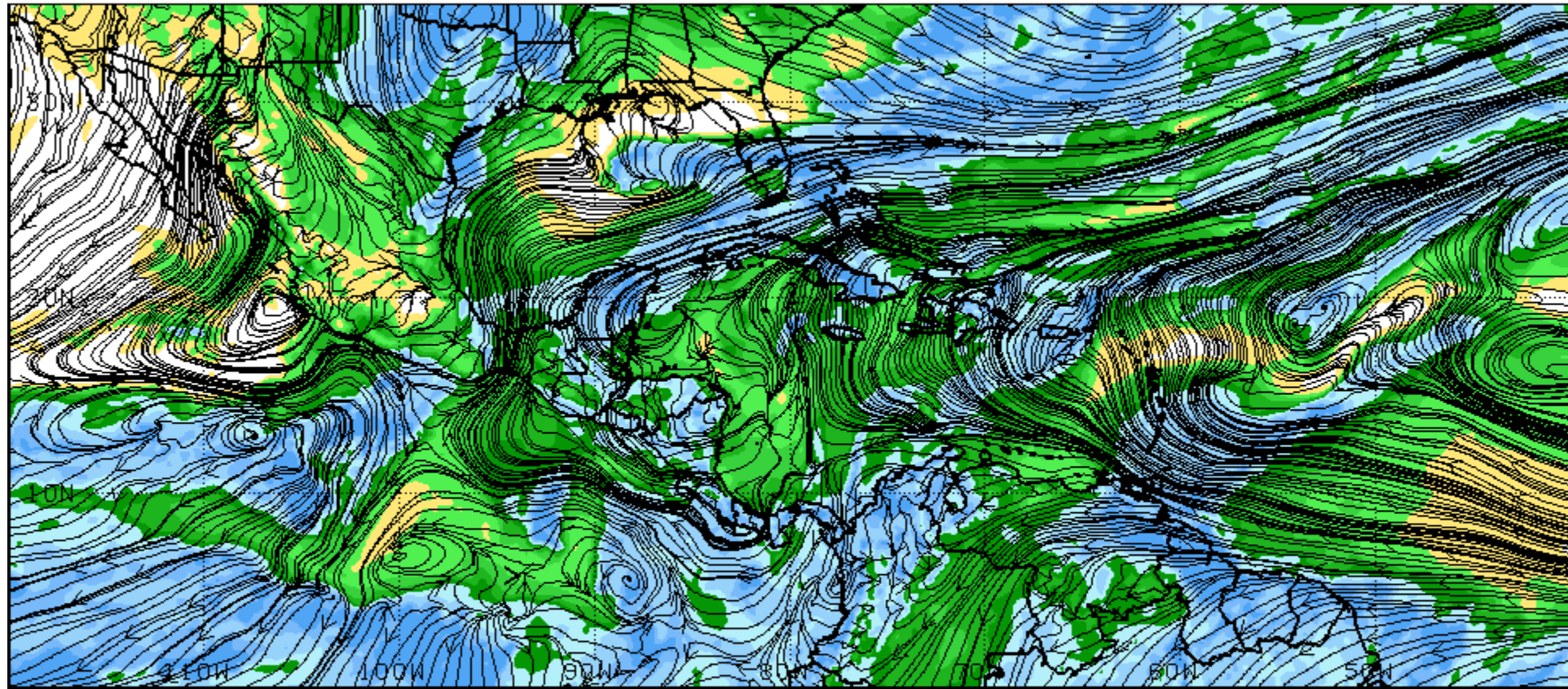
Cloud liquid and ice water specific humidity
 Met Office EUREC4A 2km from 2020/01/26 00Z
 EUREC2 (59.2W,15.0N to 58.4W,11.0N, 0 to 12km)
 Mon 2020/01/27 18Z T+42



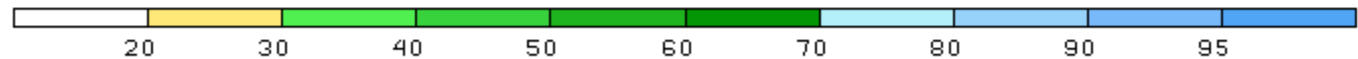
850 hPa winds and moisture (D+1)



850 hPa winds and moisture (D+2)

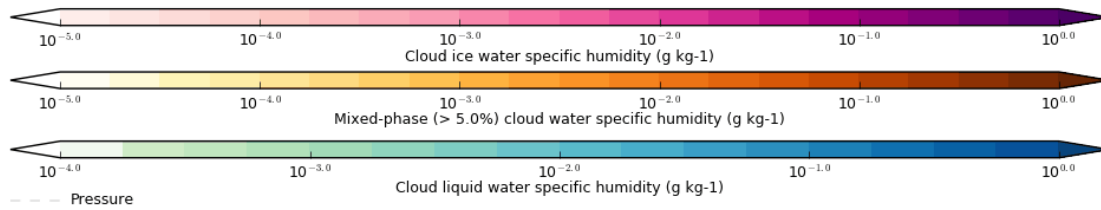
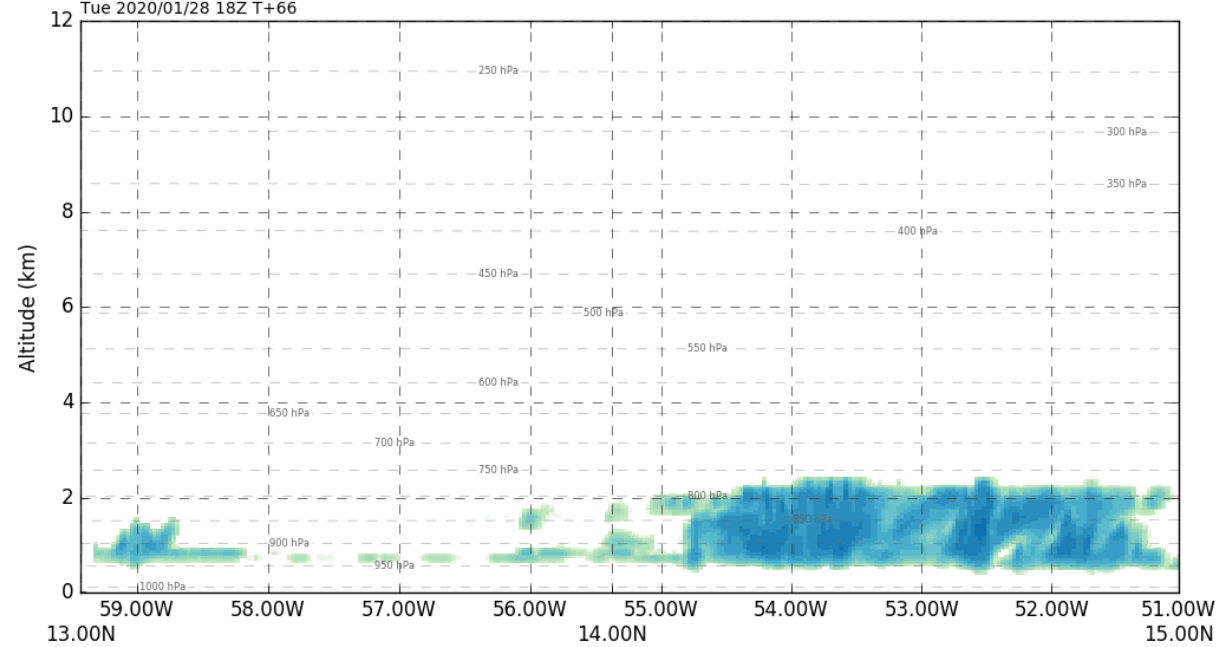


NOAA GFS 20200126 100zCYC FCST 850mb RH (in%) and Streamlines VALID 20200128/1800V066

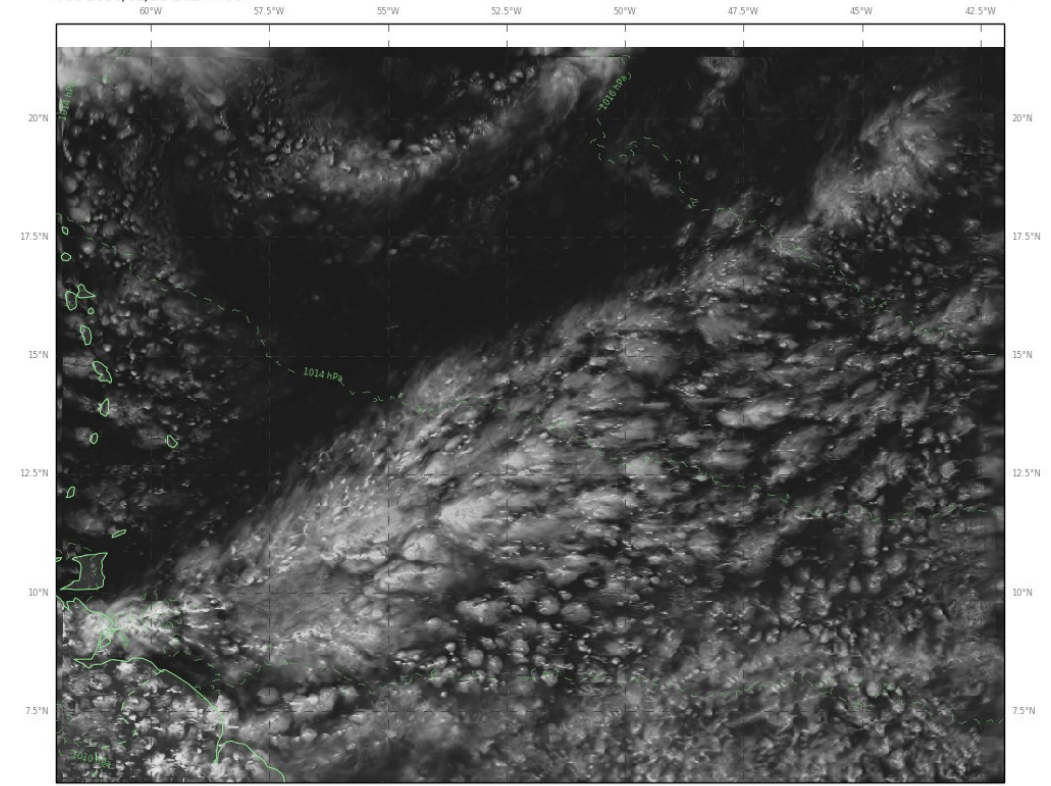


Cloud (D+2)

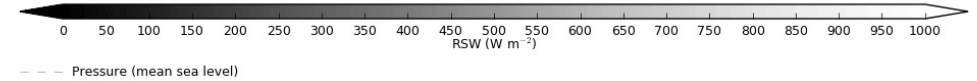
Cloud liquid and ice water specific humidity
 Met Office EUREC4A 2km from 2020/01/26 00Z
 EUREC1 (59.43W,13.16N to 51.02W,14.82N, 0 to 12km)
 Tue 2020/01/28 18Z T+66



Reflected Shortwave Radiation at TOA
 Met Office EUREC4A 2km from 2020/01/26 00Z
 Tue 2020/01/28 18Z T+66

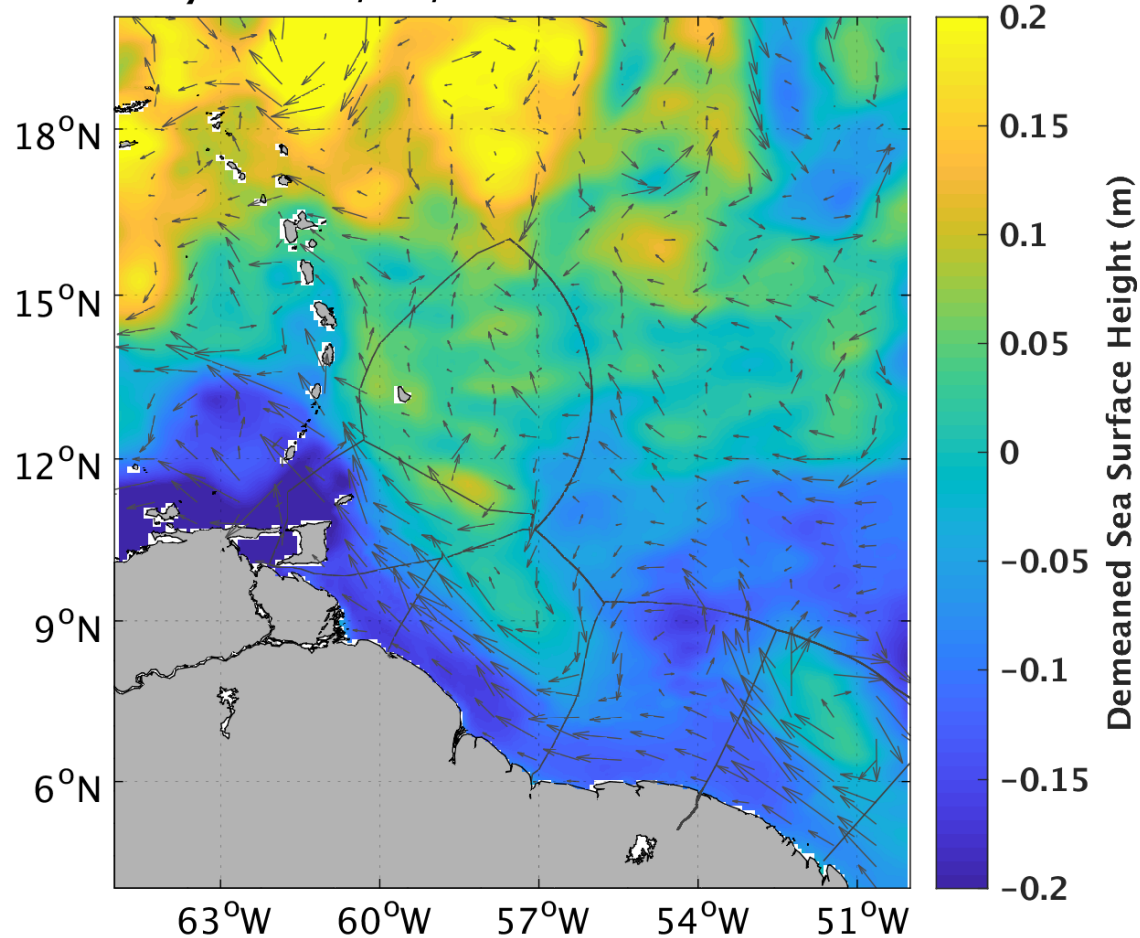


MIN=65.000, MAX=858.734, MEAN=207.637, SD=121.761, RMS=240.705

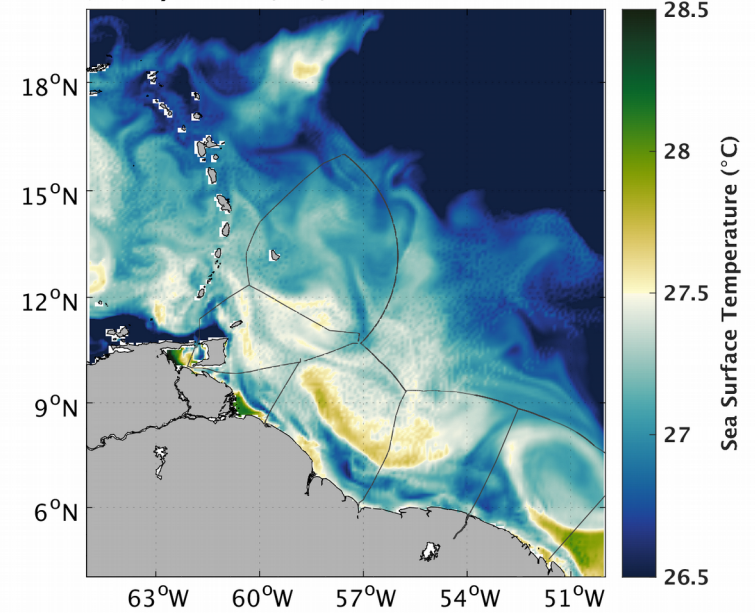


Wave height/ocean T

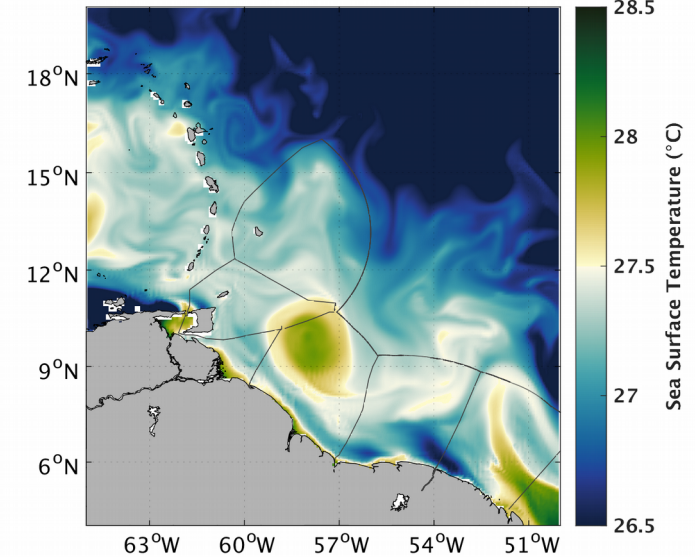
SSH Hycom 26/01/20 Forecast at +24 hours



SST (°C) Hycom 26/01/20 Forecast at +24 hours



SST (°C) Mercator 26/01/20 Forecast at +24 hours



Summary

- Synoptics: Low to West of Florida, Broad warm sector, High west of Cape Verde. Small scale local ridge/trough system.
- Tomorrow: possibly some clouds reaching up to ~ 2km,