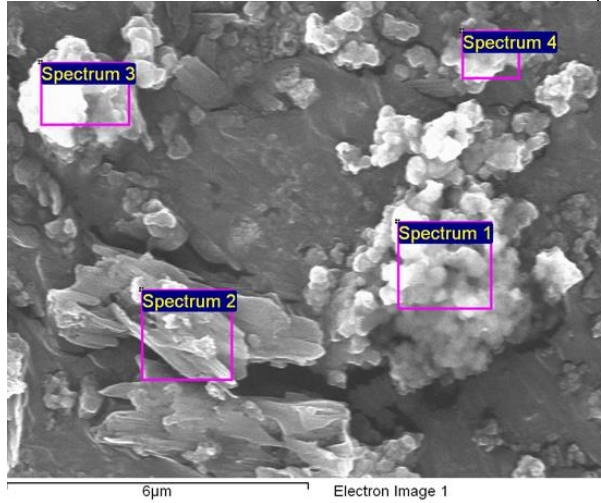
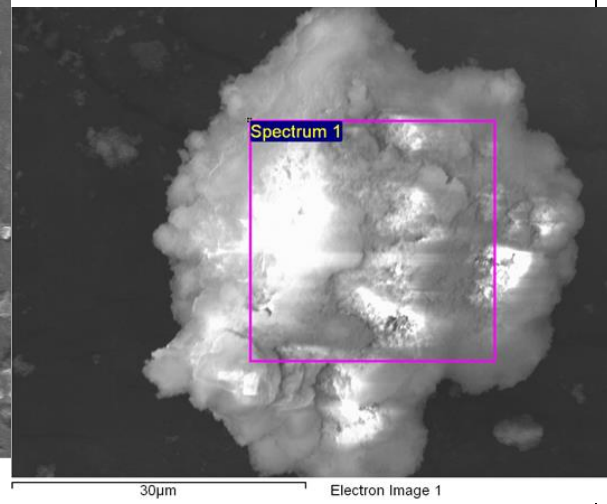


Supplementary data

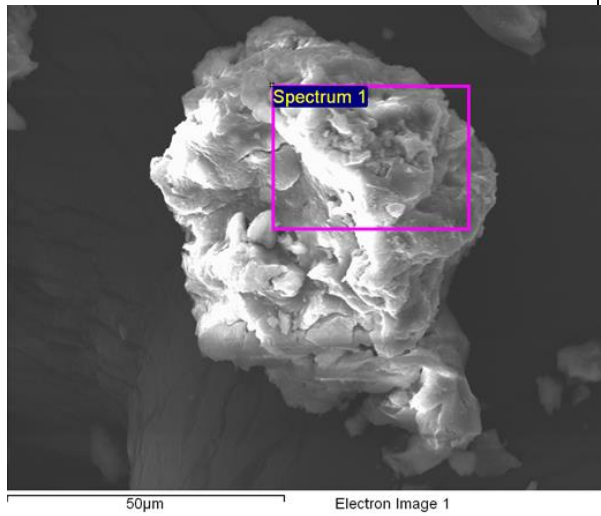
a) 1000 mg l⁻¹ on plastic disk



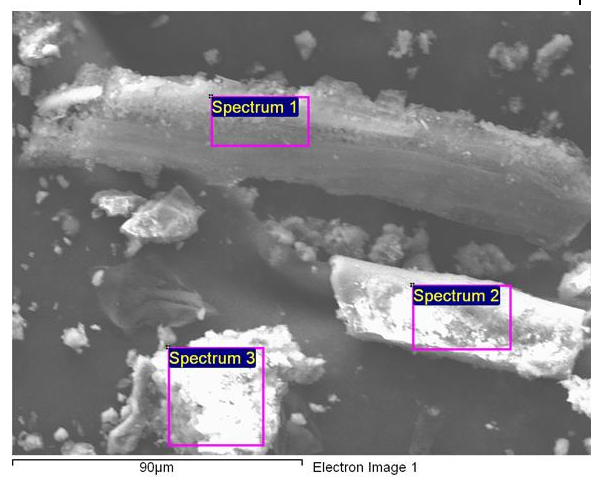
b) 1000 mg l⁻¹ unwashed



c) 500 mg l⁻¹ unwashed



d) CW precipitate



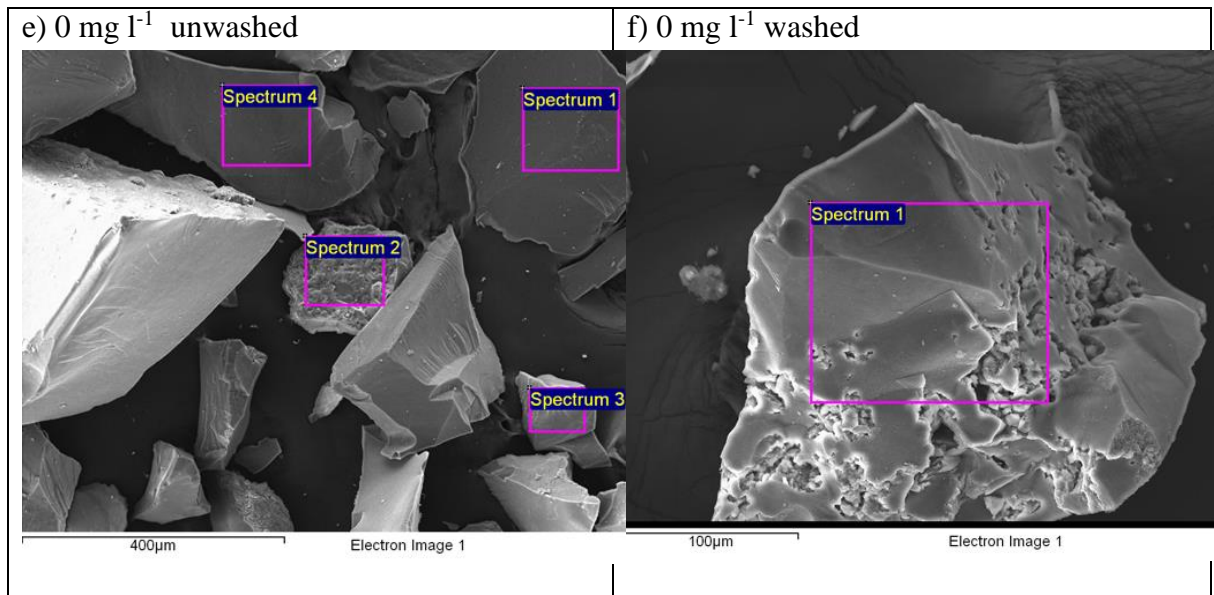


Fig. 1 SEM micrographs of precipitates calcium carbonate particles obtained following carbonation or removed from the trial wetland (a-c). At 0 mg Ca L, the precipitate dawsonites particles of regular plate-like were produced (e-f).

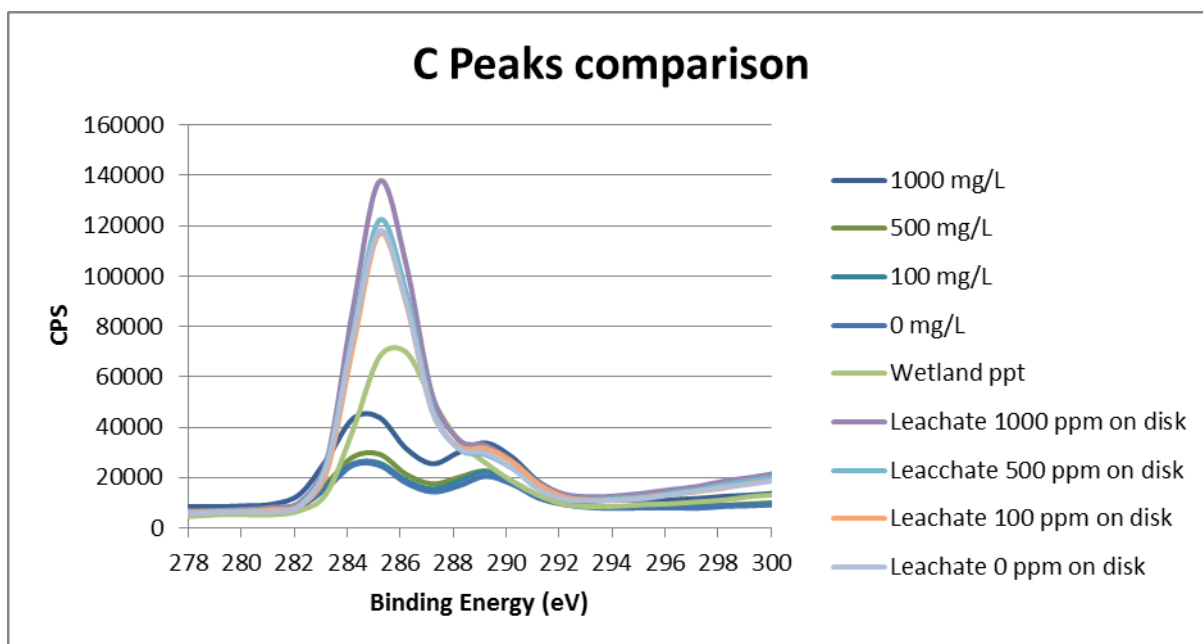
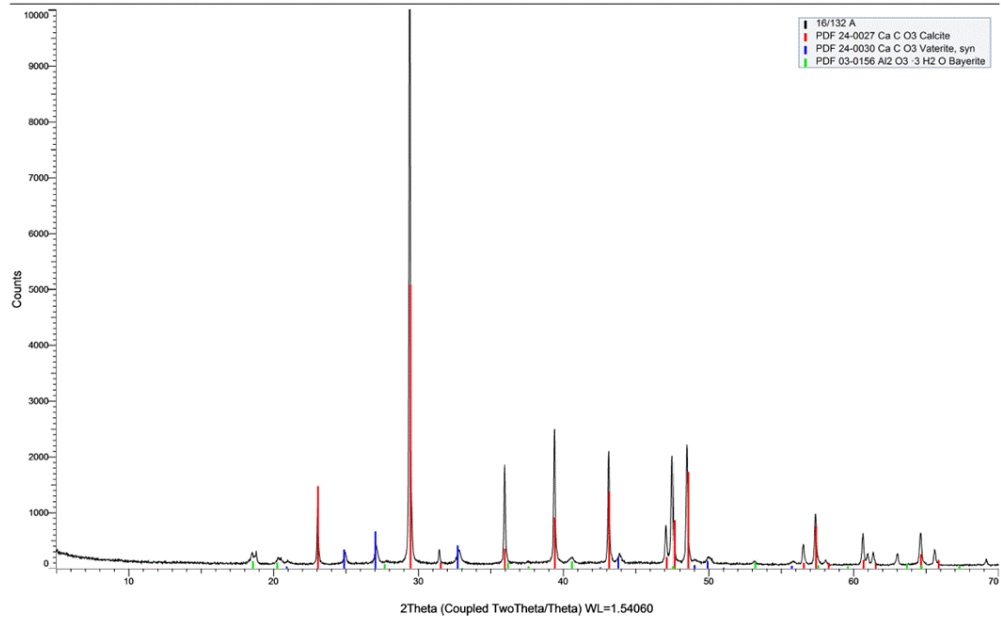
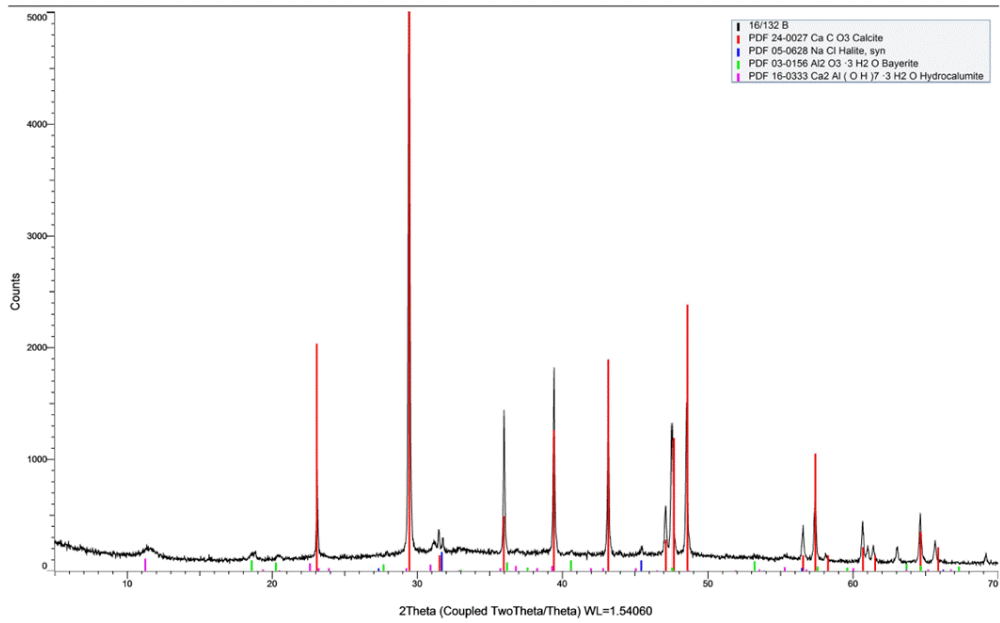


Figure 2: XPS Carbon peaks comparison

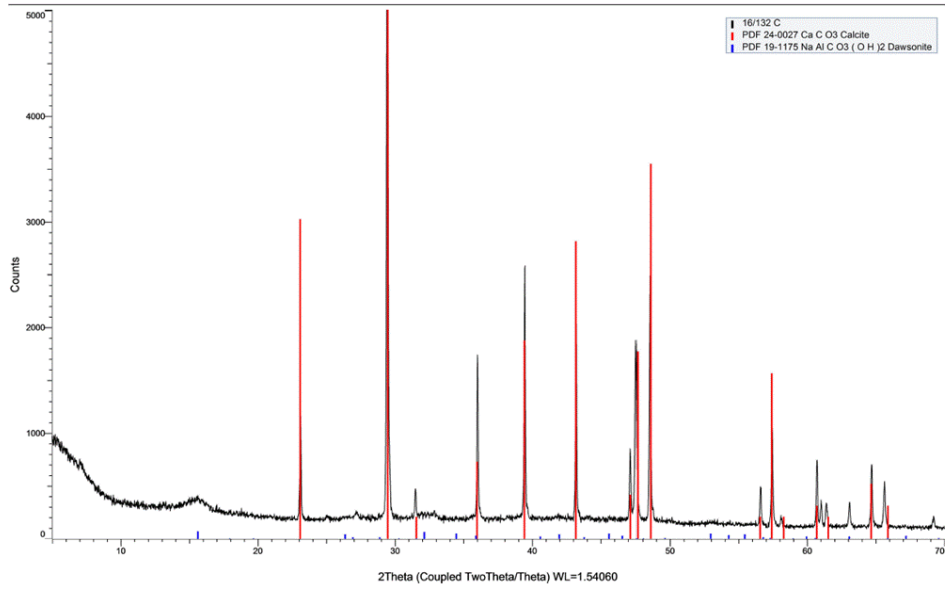
A1 1000 mg Ca L⁻¹



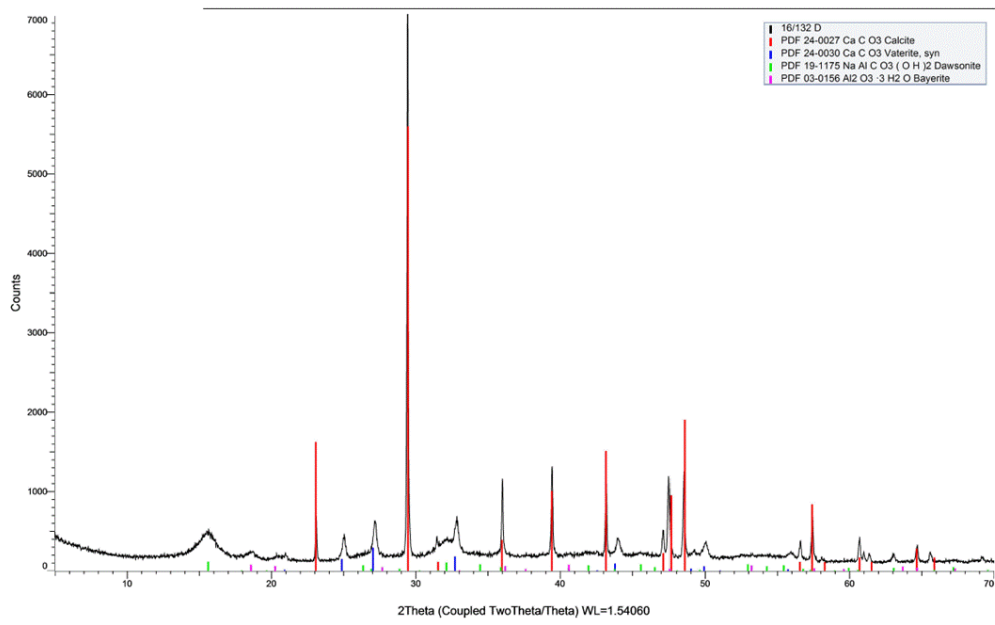
A2 1000 mg Ca L⁻¹ rinsed



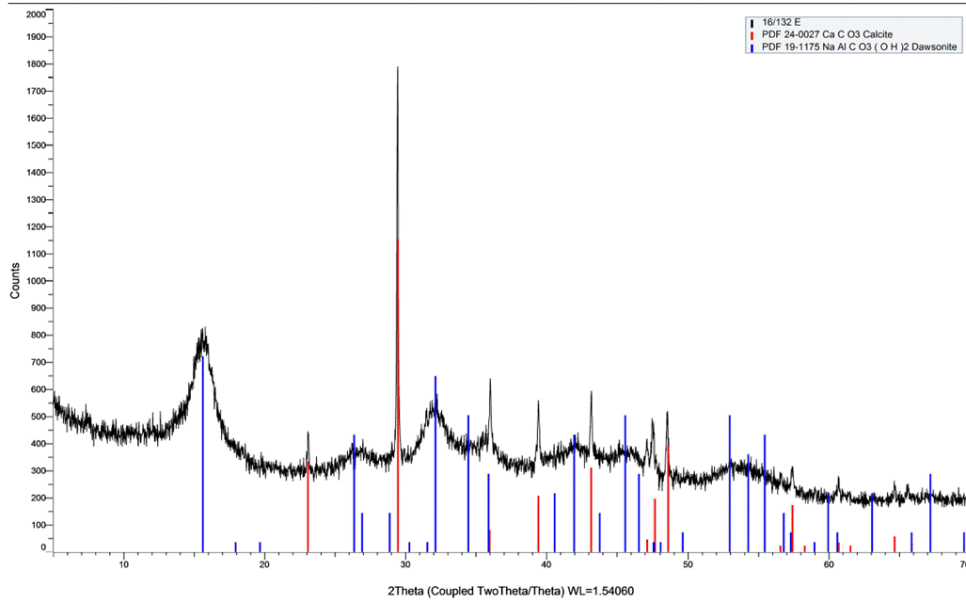
B1 500 mg Ca L⁻¹



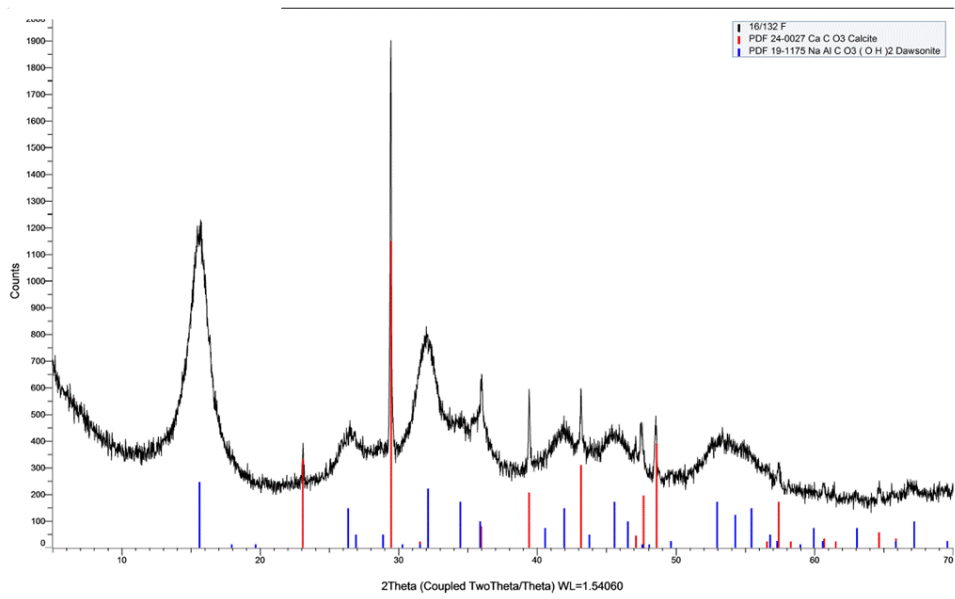
B2 500 mg Ca L⁻¹ rinsed



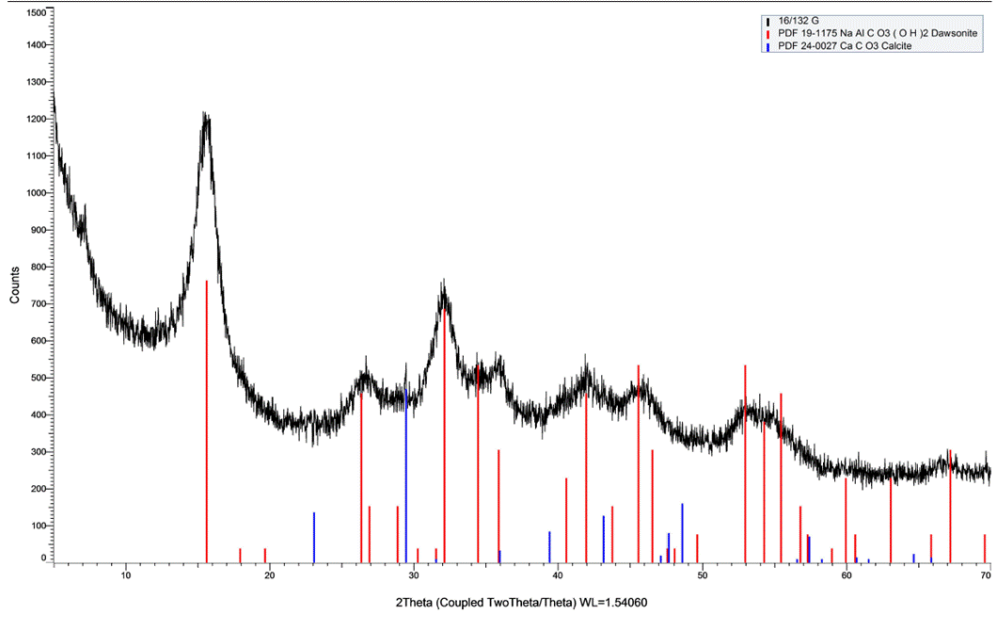
C1 100 mg Ca L⁻¹



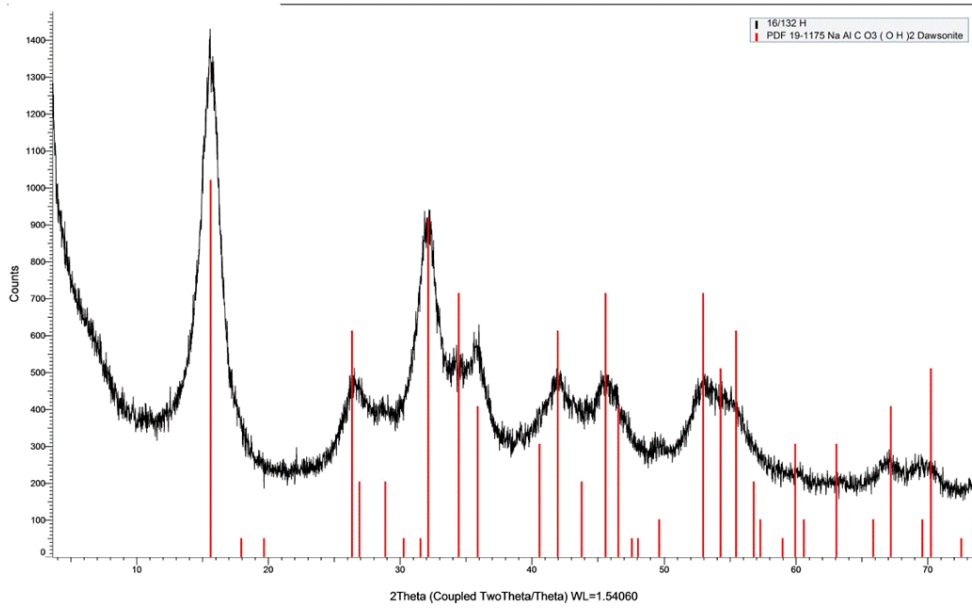
C2 100 mg Ca L⁻¹ rinsed



D1 0 mg Ca L⁻¹



D2 0 mg Ca L⁻¹ rinsed



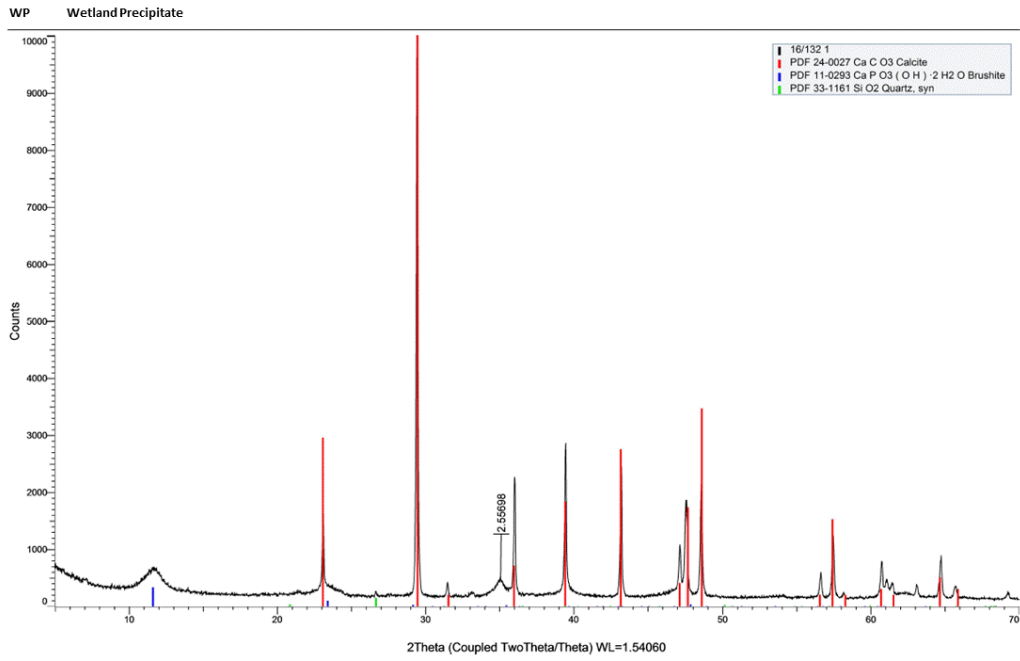


Figure 3: Individual XRD data for wetland treatment precipitates