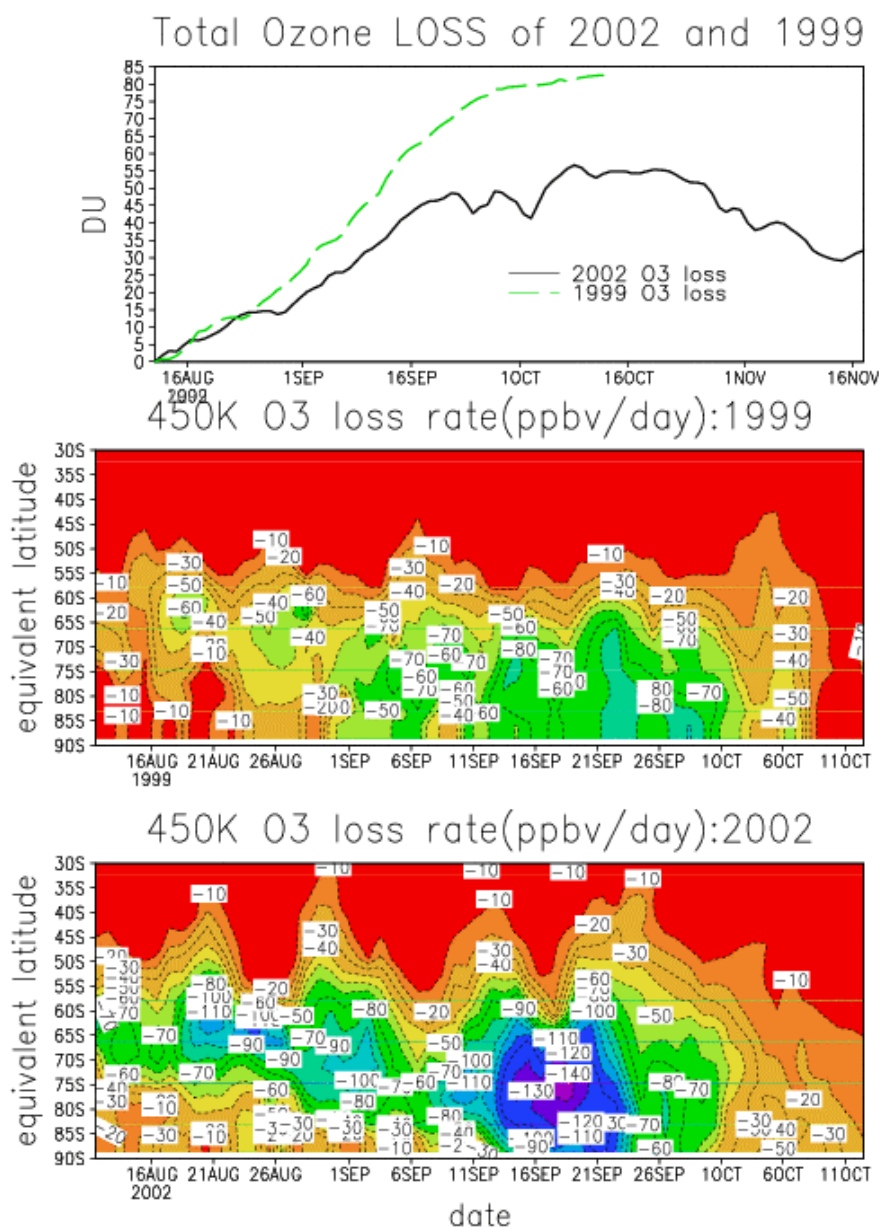


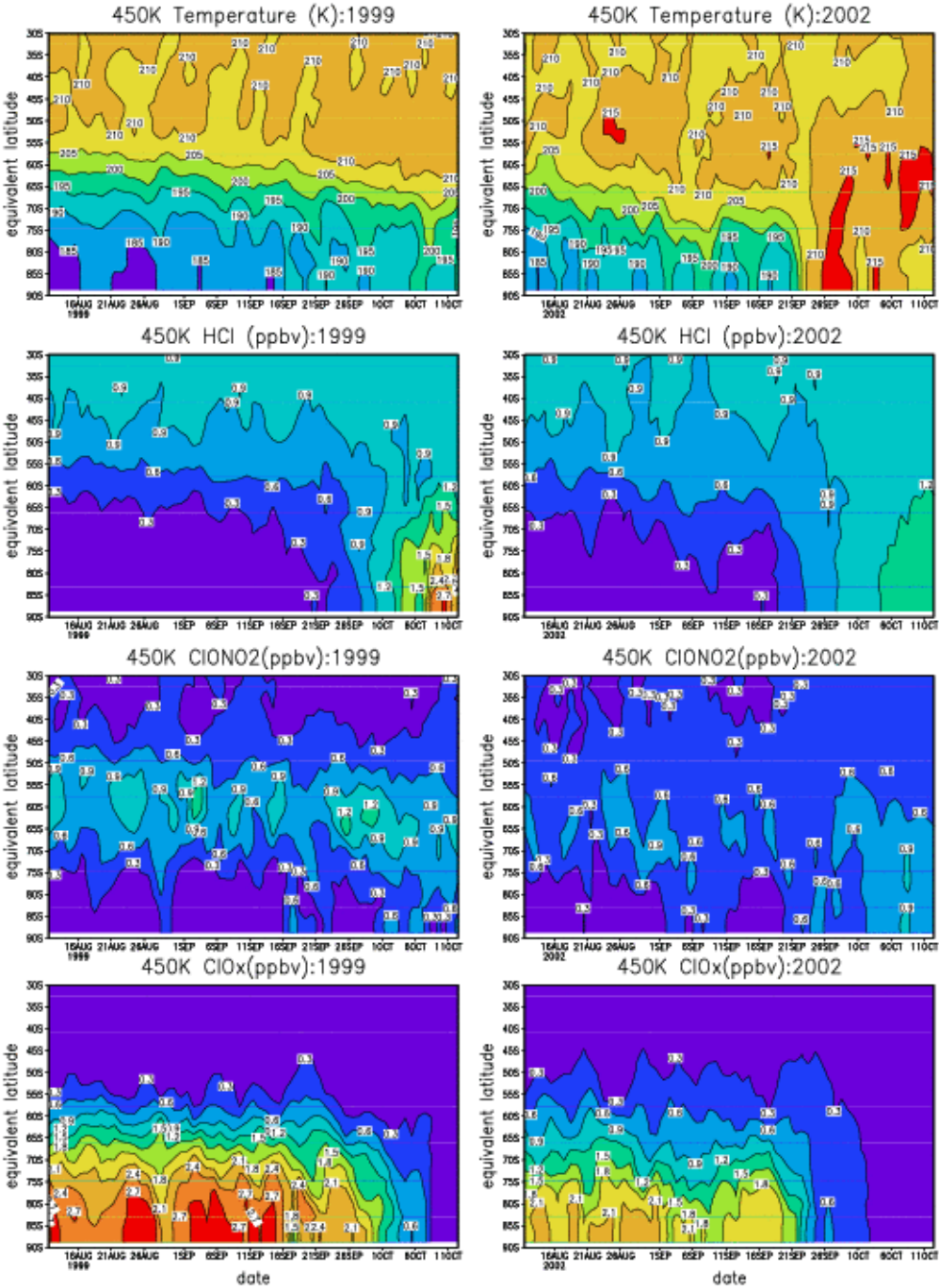
COMPARISON 1999 v 2002 MODELLED OZONE LOSS



- **OVERALL LESS CUMMULATIVE OZONE LOSS IN 2002**
- **BUT DISTURBED VORTEX CAUSED LARGE OZONE LOSS RATES ~65S IN LATE AUGUST AND LATE SEPTEMBER**

COMPARISON 1999 v 2002

CHLORINE ACTIVATION



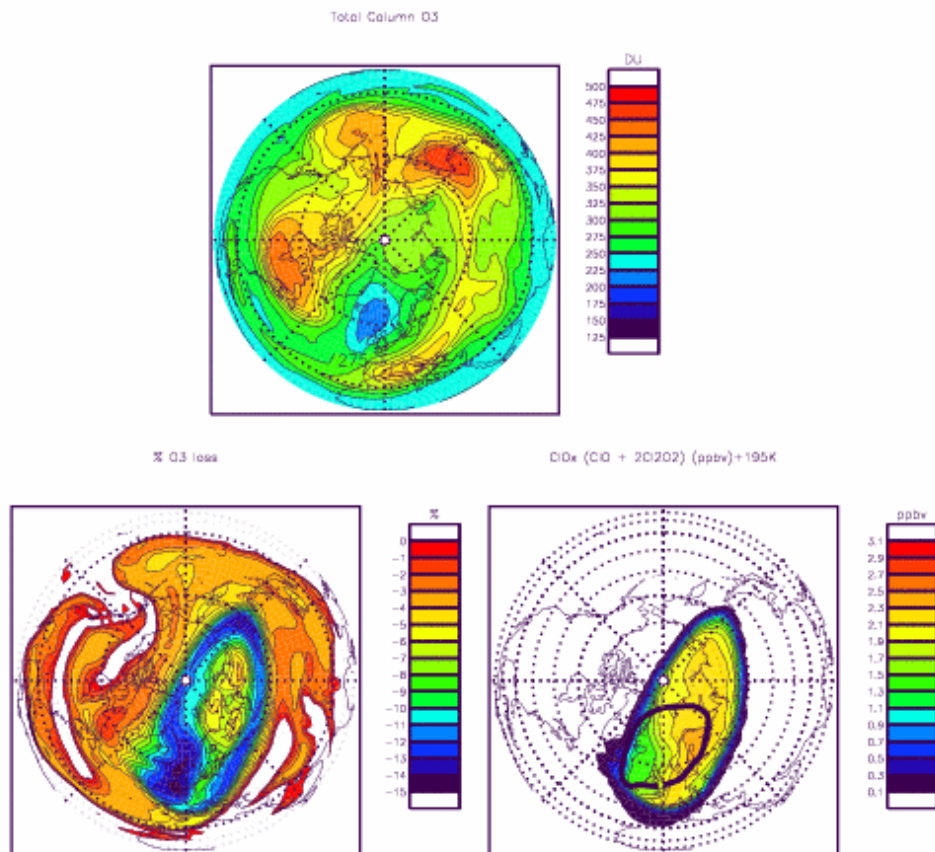
2002/3 ARCTIC WINTER

- **SLIMCAT 3D NRT RESULTS**
- **<http://www.env.leeds.ac.uk/slimcat>**

Univ Leeds SLIMCAT 3D MODEL

2003 1 11 12

475K min. T:186K



- **Winter very cold so far**
- **Ozone loss ~15% at edge of vortex (since 1/12/2002)**